

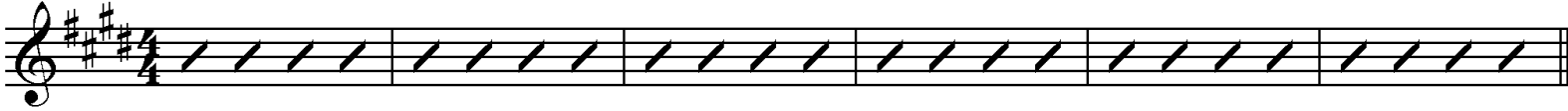
# 나 오직 주님만

♩ = 68

Words and Music by Jesusholic Band

## INTRO

C#m A B C#m A B G#m A



## V1

C#m A B C#m A B



Come to me, Spirit of God. \_ 지금 내 게 오 - 소 서 -

C#m A B C#m A B



Fill me up, Spirit of God. \_ 나 를 채 워 주 - 소 서 - Oh \_

C#m A B C#m A B



Oh \_

## INST.

C#m A B C#m A B



## V2

C#m A B C#m A B



Come to me, Spirit of God. \_ 지금 내 게 오 - 소 서 -

C#m A B C#m A B



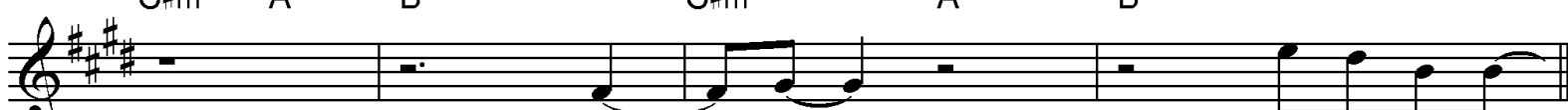
Fill me up, Spirit of God. \_ 나 를 채 워 주 - 소 서 -

C#m A B C#m A B C#m A B



나의 목소리로 - 주께 부르짖 - 으니 - 하나님 아버지 - 나를 기억하 - 소서 - Oh \_

C#m A B C#m A B



Oh \_ 내 모든 것

# 그 사랑 때문에

♩ = 76

Words and Music by Jesusholic Band

**PRE-INTRO**

E

**INTRO**

E E

REPEAT 3x

**V**

E Emaj7 E7 A/E

무엇과도 바꿀 수 없 - 는 - 값 없이 주신 대속의 은 - 혜 - 내  
 이해할 수 없 을 지라 - 도 - 다 표현할 수 없 을 지라 - 도 - 순  
 십자가의 사랑 그사 - 랑 - 놀 략 다 주의 은혜 그 은 - 혜 - 눈  
 폭포 같은 주의 은혜 - 로 - 날 마다 나를 희게 씻으 - 사 - 온

A A(add2) 1.3. 2.4.

생명보다 귀한 주사 - 랑 - 모 든 것 되신 예수 그리스도 - 다  
 전한 믿음으로 살리 - 라 - 내 의가 되신 예수 그리스도 - 주 의  
 물이 흘러 멈출 수 없 - 는 - 보 혈의 사랑 예수 그리스도 - 저  
 전한 삶의 제사드리 - 리 - 내 삶의 이유 예수 그리스도 -

**C**

E B

십 자 가 그 주 의 십 자 가 그 희  
 때 문 에 그 사 랑 때 문 에 부 활

A B 1. 2.

생 의 능 력 으 로 다 이 루 신 주 님 의 그 사 랑 그 사 랑 왕 예 수  
 으 로 오 신 구 원 자 나 의

**MIDTRO**

E

D.S. al Coda

# Yes to the Lord

Words and Music by Jesusholic Band

♩ = 68

INTRO

G D Em C

To You\_

V

G D Em C

Je-sus I su - rren-der. It is trigger-ed by the Grace of God. Yes to\_

G D Em C

Je-sus, yes to the Fa-ther. It\_ brings Christ, walk in to my heart. I

PC

D G

lift my hands\_ to the Lo-ving God.\_ I sing to You\_ the Son of God\_ cause You

C D

are the One who's hold - ing my hand.\_

C

G D

All I say is, yes to the Lord. My\_

Em C

God is su - ffi - cient and He makes me strong - er. \_

G D

All I say is, yes to the Lord, \_ cause Your

Em C

grace is sus - tain - ing me. So I give my yes to the Lord. D.C.

# Song of Isaiah

♩. = 48

Words and Music by Jesusholic Band

INTRO

F C Dm Bb

V

F C

look to the hea- ven, filled with Your pre sence. The

Dm Bb C

an - gels are sing- ing, for the beau - ty of Your glo - ry. I'm

F C

touched by burn ing fi - re, of mer - cy and love.

Dm Bb

For I am re- deemed, I'm hum - bled by Your

F/A Gm

glo - ry, ho - nor and po - wer!

C1

F C Dm F

Here I am, wai - ting for Your spi - rit.

Bb C Dm (C)

Take my hands to Your e - ter- ni - ty. I'm

# Reign in Us

♩ = 66

Words and Music by Jesusholic Band

## INTRO

Gm F Eb Gm F Bb Eb

Gm F Eb Cm Dm Eb

## V

Gm F/A Bb Gm F/A Bb

I need You\_\_ Lord.\_\_ Don't hide from\_\_ me,\_\_ come save my\_\_ soul.\_\_

Gm F/A Bb Gm F/A Bb

Lord, I'm des- pe\_\_ rate,\_\_ for all You\_\_ are,\_\_ come have my\_\_ life.\_\_ So

Gm F/A Bb Gm F/A Bb

I call on Your\_\_ name,\_\_ give ear to\_\_ me\_\_ and hear my\_\_ cry.\_\_ I

Gm F/A Bb Gm F/A Bb

know that You will\_\_ come\_\_ and make me\_\_ new\_\_ and make me\_\_ whole.\_\_

## PC

Eb F Eb F

You're my God! The Ho - ly One!

## C

Bb F Gm Eb

Come, reign in\_\_ us.\_\_ You're the on - ly one I\_\_ need, Je- sus.\_\_

Bb F Gm Eb

Hold me close\_\_ with the po- wer of Your\_\_ love.\_\_ Reign in us.\_\_


# Nobody Knows

♩ = 102

Words and Music by Jesusholic Band

INTRO

A A(add2)/C# F#m D



How

V1

A A/C# F#m D



beau-ti-ful\_\_\_\_\_ that You saved\_ me\_ at the cro - ss,\_\_\_\_\_ Oh Je - sus.\_\_\_\_\_

A A/C# F#m D



Now I'm found\_\_\_\_\_ cause You searched\_ for me at the cro - ss,\_\_\_\_\_ My Sa - vior.

C1

A E/G# F#m D



No-bo-dy knows\_ that Your love\_ is for me.\_\_\_\_\_ Your love\_ is so blind\_ for me.

A E/G# F#m D A



No-bo-dy knows\_ that Your love\_ is for me.\_\_\_\_\_ Your love\_ is my e - verything.\_\_\_\_\_ How


V2

A A/C# F#m D



bea - ti - ful,\_\_\_\_\_ You made a way\_ for me at the cro - ss,\_\_\_\_\_ Oh Je - sus.\_\_\_\_\_ I

A A/C# F#m D



run to You,\_\_\_\_\_ just as You called\_ me\_ at the cro - ss,\_\_\_\_\_ I meet\_ You\_ there.

# King of Glory

♩ = 70

Words and Music by Jesusholic Band

## INTRO

Em  
(E.G. delay signal in) (Drums in)  
Em F#m/E Em  
Em F#m/E Em  $\text{♩}$  Em F#m/E Em  
Let's

## C1

Em D Em G Em  
take our - self to the Al - migh - ty\_\_ God! Come bow down\_ be - fore our\_ God!\_\_ Let's  
Em D 1. Em G Em  
take our - self to the Ex - al - ted\_ God! Hold on to\_ the Awe - some\_ God!\_\_ Let's  
2. Em G Em  
on to\_ the Awe - some\_ God!\_\_

## V

Em D  
There is the word of\_\_ God. The world was made by\_\_ God. Sing it!  
A/C# Cmaj7  
There is the breath of\_\_ God. He gave\_ us a whole new life.\_\_\_\_\_

# I'll Rise

♩ = 72

Words and Music by Jesusholic Band

## INTRO

E $\flat$  E $\flat$  maj7 B $\flat$  B $\flat$ (add2)

V E $\flat$  E $\flat$  maj7 B $\flat$  B $\flat$ (add2)

You are there a-bove the clouds, al-ways there.  
 Take my life in Your arms. Hold me close

E $\flat$  E $\flat$  maj7 B $\flat$  B $\flat$ (add2)

Your love is bright, shining like the sun, al-ways there.  
 by Your love. Bring me near, I'll be there.

PC  $\text{Cm}^7$  Dm $^7$  E $\flat$  B $\flat$

Woo Woo

Cm $^7$  Dm $^7$  E $\flat$

Woo I will soar with You like an ea - gle.

C E $\flat$  B $\flat$

I will rise, I will rise, high - er.

E $\flat$  B $\flat$

I will rise, I will rise, for You.

NO REPEAT 1st X

V E $\flat$  E $\flat$  maj7 B $\flat$  B $\flat$ (add2)

Look to the sky so high and wide, I'll be there.

E $\flat$  E $\flat$  maj7 B $\flat$  B $\flat$ (add2)

By Your wings, I will fly, I will fly.

D.S. al Coda



# Hang On

Words and Music by Jesusholic Band

## INTRO

♩ = 152

B B/D# E

## V

B E

When your heart is empty, turn your eyes to Je - sus.  
If your heart is burned down, come and search for Je - sus.

B/D# E

With your faith and passion, turn a - round to Je - sus to Je - sus.  
With your hope and passion, turn a - round

## PC

E F#

He's here with o - pened arms!

E F#

He's here to fill your needs! Hang on to Je

## C

B F# G#m E

- sus! He's fai - th - ful! He's the on - ly one who is Al - migh - ty! Hang on to Je

B F# G#m E

- sus! He's a - ble! There is po - wer in the name of Je - sus!

## INST.

B B/D# E

# By Your Grace

♩ = 68

Words and Music by Jesusholic Band

## INTRO

C#m A E C#m A E



I could-n't live,

## V

C#m A E



I could bare - ly breathe. I knew a - bout  
with Your wound - ed hands. Lead me to

C#m A E



the cross You and all the things You've done.  
and show Your migh - ty will. But I was still

De-fend me

C#m A E B/D# C#m A



look - ing for my place, now I'm stand - ing in the dark - ness, there You are.  
with Your ho - ly shield, and save me from the things I can not see.

## PC

E A B C#m E/G#



But now I know, the love You've shown, is the rea - son that I live. And

A B A B



now I trust, be - cause of You, You are the liv - ing God. By Your grace